

# 室內 Interior

Embodied Dreams : 心嚮的映現  
Elegant Residences



#363  
12 2023

設計 朱怡芬 王正行 張豐祥 袁丕宇 張樹樹 林宇賢  
鄭明輝 簡嘉儀 陳頌 余同輝 陳冠宏 龐子顯 李智翔 高毅緯  
觀點 許純瑜 / 關於山林 何宗憲 / 東方美的意義 陳鴻文 / 設計識別策略  
報導 金點設計獎系列 / LAJOS 2023 台灣光環境獎 節慶派對家具選

NTD230/RMB88/USD22.5 www.interior-mj.com.tw

# Timeless · Home

## Timeless · 雅邸

**設計者** 元璽國際企業有限公司 / 朱怡芬  
**參與者** Luc Chiang, Anne C. Lin, Ethan Huang, Jay Lai  
**攝影者** Sebastien Veronese, Olivier Marcenay  
**燈光設計** 十聿照明設計有限公司 / 賴雨農  
**空間性質** 住宅  
**坐落位置** 台灣  
**主要材料** 水泥質地的礦物漆、白色石粉礦物漆、白色防水礦物漆、  
橡木染色鋼刷木皮、白橡木地板、皮革染藍、texture 玻璃、  
黑色鍍鈦鋼板  
**面積** 70 坪

**Designers** Celia Chu Design & Associates (CCDA) / Celia Chu  
**Participant** Luc Chiang, Anne C. Lin, Ethan Huang, Jay Lai  
**Photographer** Sebastien Veronese, Olivier Marcenay  
**Lighting Design** Lighting Design & Associates / Uno Lai  
**Category** Residence  
**Location** Taiwan  
**Materials** Plaster texture paint, white special technical waterproof paint,  
brushed-oak wood veneer, white oak flooring, dyed leather, texture  
glass, tinted metal panel  
**Size** 231.4m<sup>2</sup>



回應理查·麥爾 (Richard Meier) 的白派建築，  
細心融入屋主個人特質，釐定舒朗有致的生活空間。

《Timeless · 雅邸》坐落於台北市菁華地段，朱怡芬設計師以都會人文宅邸為題，為空間植生獨特韻味，用如詩般的雅致筆觸為每一細節精心雕琢，勾勒當代雅邸的豐美內涵。

### 淨朗雅致的鋪陳

朱怡芬設計師談到，屋主單身，為金融專業人士，曾遊歷各國，富有品味且極為重視生活質感，鍾愛淨朗不失細緻的空間。「當代單身男子的雅居」是開展全作藍圖的起點，期望空間設計不僅回應普立茲克建築獎 (Pritzker Architecture Award) 得主理查·麥爾 (Richard Meier) 的白派建築，亦融入屋主的個人特質，最終拍定用純色底襯配以細緻的居室內涵，釐定出一座舒朗有致的當代雅邸。

此案在低斂沉穩的手法下，書寫著精緻人文風格。就空間布局而言，採用輕巧的穿透手法，藉拉門開闔或場域借景之勢，變化出場域層次的連貫性，突顯了建築優勢。像是，讓公共廳區與主臥室、書房彼此通透，主臥室採用雙滑軌門劃界與廳區連成回字形動線，平日屋主一人在家時，只需收攏門片就能享受開揚的空間體感，而更衣室的滑軌門與玄關、主臥衛浴的動線連貫，亦體貼屋主差旅前後的洗滌便利。

這座宅邸乍見簡約詩意的空間筆法其實內含豐富的構景巧思，像是在開放式空間中，客廳、餐廳之間透過立面選材差異，為通透廳室增添了畫面變化。半開放式廚房與餐廳之間採用吧台劃界，在推移鍍鈦滑軌門片後，吧台區背景可變化為酒櫃牆或廚區窗口，讓背景主題能因應當下活動所需。

1. 質地粗獷的塗料構成雅樸背景並搭配精品家具，空間氛圍率性且不失雅致。2. 客廳、餐廳之間透過立面元素的變化作為劃定場域的暗號。

1. Rough textured background wall paired with boutique furniture forms a casual and elegant atmosphere. 2. The change of elevation finishes between the living room and dining room is used as clue to define the space.

## Celia Chu



元璽國際企業有限公司 / 朱怡芬  
Celia Chu Design & Associates 創始人及首席設計師  
朱怡芬憑藉優雅精緻的現代酒店和高端住宅項目而享譽國際，作品展現出獨特美學且設計層次豐富的風格。  
自 2007 年於台北創立元璽國際企業有限公司 Celia Chu Design & Associates (CCDA) 以來，便領導一群優秀的頂尖設計師團隊，完成許多知名的設計項目，其中包括曼谷瑰麗酒店、台北國賓大飯店、埃及開羅塞米勒米斯洲際酒店，以及歐亞亞太地區凱悅酒店等。她對室內設計的願景是兼具優雅風格與實用效益，並追求在酒店空間呈現對生活的獨特創意視角。工作室成立以來，憑藉在豪華精品酒店和餐飲業所積累的豐富經歷，以及獨特創意靈感和全方位設計策略整合，讓每個設計方案各具獨特視角與敘事手法，展現人文溫度美學，呈現既現代又傳承的空間設計。

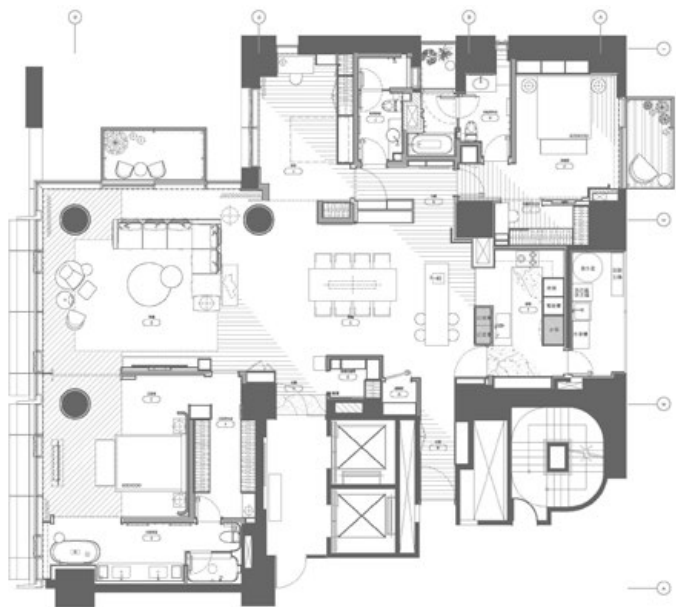
Celia Chu Design & Associates (CCDA) / Celia Chu  
Celia Chu Design & Associates Founder & Chief Designer  
Chu is an internationally renowned interior designer known for her elegant and sophisticated modern hotels and high-end residential projects. Her work showcases a unique aesthetic and is rich in depth and design style. Since founding Celia Chu Design & Associates (CCDA) in Taipei in 2007, she has led a team of top designers who have completed many well-known hospitality projects, including Rosewood Bangkok, Ambassador Hotel Taipei, InterContinental Cairo Semiramis in Egypt, and several Hyatt Regency hotels in the Asia-Pacific region. Her vision for interior design combines elegance with practicality and presents a unique and creative perspective on life. Since its establishment, the studio has accumulated rich experience in the luxury boutique hotel and catering industry, as well as creative inspiration and comprehensive design strategy integration so that each design scheme has its own unique perspective and narrative approach. The work displays a humanistic aesthetics while presenting a space design that is both modern and timeless.

### 饒富詩意的細節

就細節觀之，設計師精心構劃材質層次與感官享受，賦予居住者一座兼具質感和精緻度的居住空間。全案使用柔白以及木色系作為主調，主要材料包括特殊塗料與天然貴木，整體設計方案不拘泥於單一風格，企圖在簡潔素雅的輪廓下呈現既摩登又現代的氣質。譬如，將管線歸整並且盡可能拉伸層高效果，突顯建築結構既有的三座圓柱，與開放格局互構恢宏的視覺效果；或是利用材料本身的質感差異，混用四款白色，為純色畫面納入色階變化，也以粗獷質地的塗料構成雅樸背景，再搭配質感細膩的精品家具，讓精緻與粗樸互成對比，展現當代雅痞的自由率性風格。

主臥套房延續暖白基調，房內選配精製家具、家飾，開放格局裡利用地坪變化界定出更衣與沐浴區。設計師特別重視浴室規劃，再從中細分出淋浴與泡澡區，使浴室保有開揚通透的感受，並巧妙利用建築圓柱遮蔽重點隱私，讓居住者在泡澡時能安心地獨享生活意趣。此外，屋主為家人預留的兩間臥房，現階段一間作為長輩套房，另一間則用為書房及多功能室，留有充裕的收納機能與開闊場地，方便居家辦公或健身使用。

朱怡芬設計師談到，儘管此作藉白色建築配以開揚視感予人恢宏的空間氣勢，但她仍然在意光線入室角度能否突顯空間整體的細膩質地，因而在規劃時特別重視光氛圍之營塑。所有對外窗均設置兩層簾幕，一是透光性的柔紗，讓日照能溫柔地漫入居室裡，二是遮光性捲簾，在必要時可以保護居家隱私或輔助完整空間情境。在照明美學上，亦邀請了「十聿照明設計」的賴雨農設計師領導專業團隊細膩鋪陳，為不同時段、使用情境，設定十種以上的光氛圍，深刻細膩生活質感與感官享受。採訪 室內雜誌編輯部



3



4

3. 平面圖。4. 重視場域層次的連貫性，突顯建築優勢。  
3. Floor plan. 4. Emphasizing the spatial hierarchy and highlighting the features of the building.



5. 精心配搭材質層次與細節鋪陳，賦予居室精緻質感。6. 重視光線入室的柔和感，室內配以設計燈具豐富照明層次。7. 採用灰白對比，突顯建築圓柱特色。8. 餐廳空間以深色木櫃作為背景，採用鍍鈦門片彈性區劃廚區。9. 鍍鈦門片滑移後，吧台區變為情境完整的調酒區。10. 天花板管線歸整，並盡可能拉伸層高效果。

5. Carefully composed finish materials and details give the living room a delicate quality. 6. Emphasis was placed on the softness of light entering the room, paired with artificial light fixtures to enrich the lighting level. 7. The contrast between gray and white highlights the building's round columns. 8. The dining room space and kitchen area are flexibly zoned with titanium-plated doors. 9. Sliding open the titanium-plated door transforms the counter area to become a full-fledged bar space. 10. Reorganized utility service piping expands the visual openness of the space.

《Timeless · Home》Located in a prime location of Taipei City, designer Chu was inspired by the urban humanistic mansion to plant a unique charm in the space, with poetic and elegant brushstrokes carefully carved in every detail that outlines the rich connotation of a contemporary residence.



### Clean and elegant lay-out

The owner of the project is a single financial professional. He has traveled to various countries, has good taste, and attaches great importance to the quality of life. "A Contemporary Single Man's Elegant Residence" was the starting point for the blueprint, which not only recalls Richard Meier's "white architecture" style, but also incorporates the personal characteristics of the homeowner.

Under a low-key and calm design approach, the exquisite humanistic style was accomplished. In terms of spatial layout, a flowing penetration technique was used to alter the visual hierarchy between the opening of the sliding door and the borrowing of the scene, to highlight the architectural advantages.

For example, the living room, the master bedroom and the private study den are interconnected, with the master bedroom demarcated by double sliding doors to form a hollow-shaped circulation. Therefore, the owner can enjoy the generous open space with the sliding panels moved into a position to conceal position.

At first glance, the simple whimsical space in fact contains rich details that are sensible for daily life, such as the semi-open kitchen defined by a bar counter, and the background changes to a wine cabinet or kitchen area after sliding open the titanium-plated slide door highlights the variability of the spatial context and the needs of the event.

### Poetic detailing

The designer sensibly matched the material layers and details to compose a living space with both texture and refinement. The whole project uses soft white and dark wood finishes as color themes through the prudent use of special paints and natural precious woods. The overall design scheme is not limited to a specific style but is rather intended to present a modern temperament that is simple and elegant.

The texture consists of contrasts of different materials and paired with four different white tones. The picture incorporates a rich visual texture depth and uses rough textured paint to form elegant backdrops. Chu then matched this with slightly plain boutique furniture, compiling the contrast between delicate and rough thereby showing the free and spontaneous style of contemporary yuppies.

The master bedroom suite continues the theme with its warm white tone, with refined furnishings, utilizing different flooring materials to define the dressing and bathing areas. The designer paid great attention to the bathroom planning. She intentionally distinguished the shower and bathing area but maintained the feeling of transparency, and cleverly used architectural columns for privacy. In addition, there are two bedrooms reserved for the owner's family, one as a parent suite, and the other is used as a study and multi-purpose room leaving ample storage functions and open space for a home office or fitness.



## 建材分析 Material Analysis

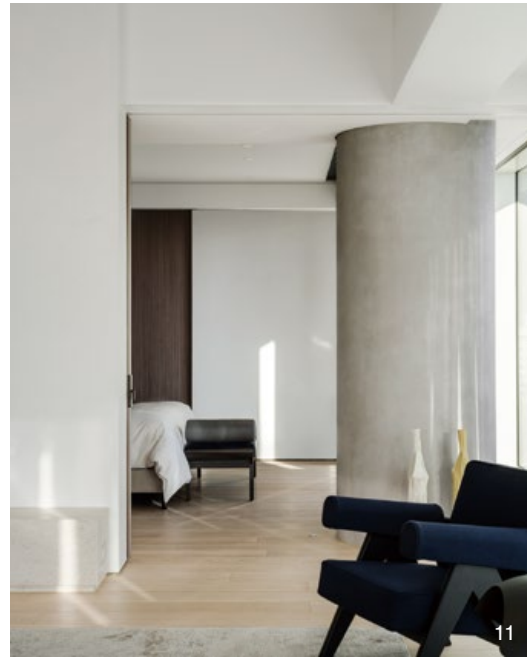
1. 水泥質地的礦物漆、白色石粉礦物漆、白色防水礦物漆：延續白色系並使用不同色階和質地，透過藝術家塗抹特殊漆面於天地壁與曲面造型上。2. 橡木染色鋼刷木皮：錯落使用於餐廳展示櫃與立面拉門，增加空間的溫潤度。3. 白橡木地板：串連起白色系的建築外觀到室內的立面與空間軟裝。4. 皮革染藍：使用於餐桌旁展示櫃背板的皮革繃板。5. texture 玻璃：威士忌吧的背板使用有反射性材質，為視覺點亮創造聚焦效果。6. 黑色鍍鈦鋼板：廚房與吧台間的滑動拉門，兼具實用與情境轉換。

1. Cement plaster paint and mineral paint finishes: special paint surfaces on the walls and curved surfaces by an artist. 2. Oak veneer: Used in the dining room display case fronts and sliding doors to increase the warmth of the space. 3. White oak flooring: connects the white exterior of the building to the interior finishes. 4. Colored leather: used for the display cabinet back board next to the dining table. 5. Texture glass: The backdrop of the whisky bar is made of reflective materials to create a focused effect. 6. Black titanium-plated metal panel: The sliding panels between the kitchen and the bar are both practical and contextual.

## 溝通重點 Communication Note

1. 保留原有建築特色，突顯出空間優勢。2. 設計思考需關注十年內可能的生活需求，並規劃三間臥房。3. 管線重整，將天花板淨高推到3米1。4. 空間規劃與情境氛圍都要考量居家宴客需求。

1. Retain the original architectural features and highlight the spatial advantages. 2. Design planning to take in consideration possible life changes over the next ten years. 3. Reorganize the service piping to increase the ceiling height to 3.1 meters. 4. The space planning to consider the needs of family and guests.



11. 廳區與主臥空間通透，視覺與光線均可延伸穿透。12. 主臥房為開放型式，利用地坪材質變化細分出睡眠區與沐浴區。13. 主臥房藉滑軌門片賦予自由動線，方便差旅前後的整理洗漱。14. 主臥浴室規劃獨立的泡澡區。15. 主臥浴室強調泡澡仍可享有遼闊的視野與舒適採光。16. 主臥浴室擁有寬闊的梳妝空間與完善規劃。17. 精緻的臥房空間，重視物料質感與光影柔和。

11. The living room and the master bedroom space are connected, and the light and view can be extended and penetrated. 12. Open plan master suite; the sleeping and bathing areas were carefully demarcated by using the change of floorings. 13. Sliding door facilitates a free flow circulation accessing the master suite. 14. Secluded bathing space. 15. The master bathroom offers a wider-angle view and comfortable lighting when soaking in the bathtub. 16. Well organized master suite dressing room. 17. Exquisite bedroom space, emphasizing the texture of materials and the light quality.

Although the white building carries a sense of magnificent spatial momentum, designer Chu still cares about whether the angle of light entering the room can highlight the delicate texture of the space. All exterior windows were furnished with two layers of curtains, one is a light-transmitting veil that allows the sunlight to gently diffuse into the space, and the other is a blackout shade, which can protect privacy when necessary. Designer Lai from Unolia Lighting Design led a professional team for the lighting aesthetic design. He set up more than 10 lighting effects for different usage scenarios. This profoundly refines life's texture and the sensory enjoyment of the home space.

